

10 YEAR GOAL / Our community's progress



Move
250,000
people out of poverty

2012 Projected
636,879
living in poverty

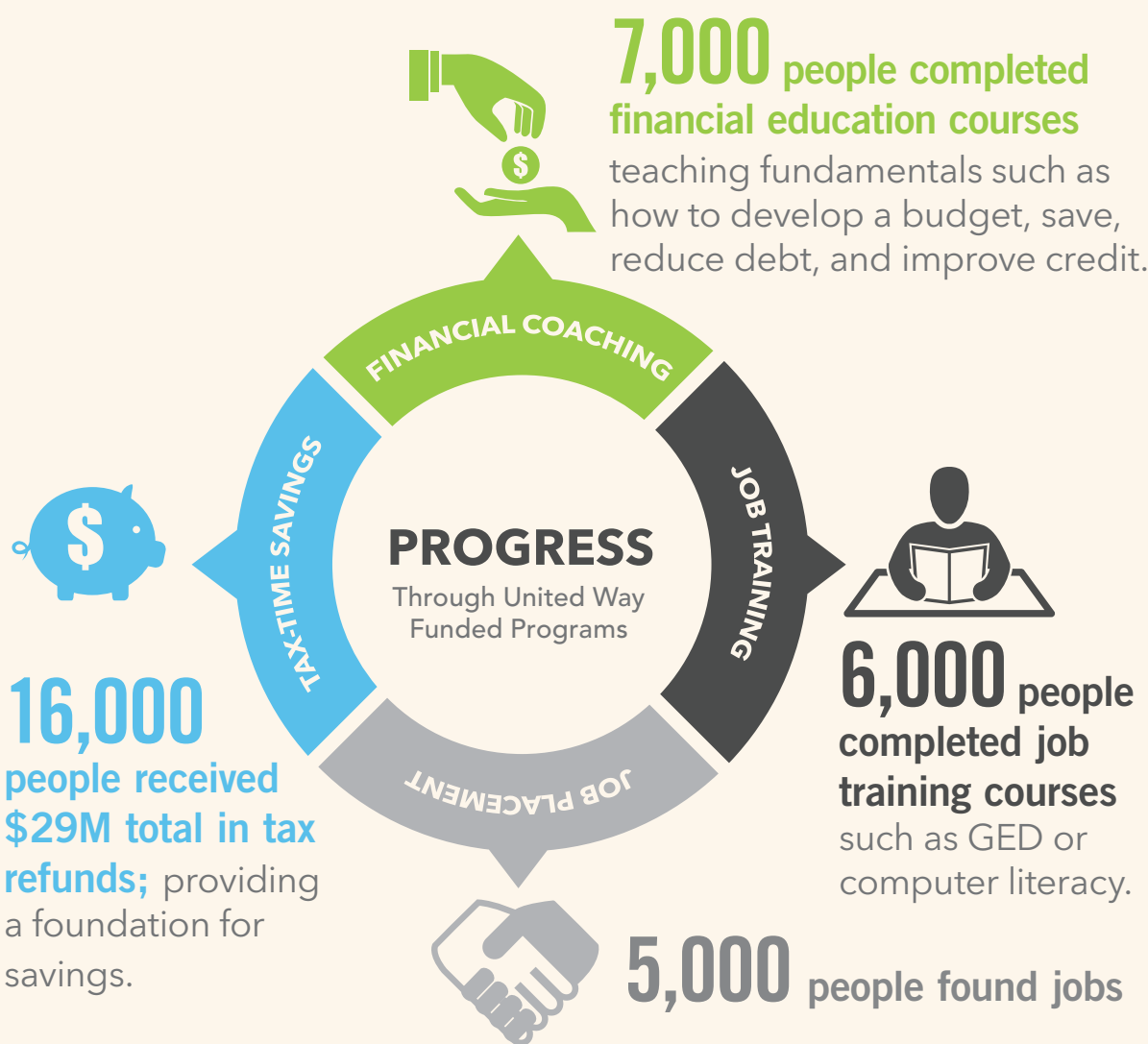
2012 Actual
582,868
living in poverty

54,011 fewer than if previous trend had continued

The United Way brings out the best in our community...

by equipping hardworking people with the knowledge of how to keep more of what they earn, and **providing the tools and training needed to get and keep better jobs.**

PROGRESS / Since 2011, United Way has invested \$9.7 million



Since 2011,
UNITED WAY OF METROPOLITAN DALLAS
has put over
70,000
people on the path to financial stability



NEED / Across our local communities

CURRENT POVERTY LEVEL:
582,868 people live in poverty

15%

KIDS UNDER THE AGE OF 18
living in poverty

22%

ASSET POVERTY RATE

39%

Insufficient resources to stay out of poverty for three months in case of a layoff, a reduction in income, or other emergency.

United Way of Metropolitan Dallas needs your help

HOW WILL you GET INVOLVED?



GIVE

When you give to the United Way, the whole community gets to keep the change!



ADVOCATE

Speak out. Your community needs you. Have a conversation with someone today about how United Way is creating lasting change in our communities.



VOLUNTEER

Change won't happen without you. Become a volunteer mentor, reader or tutor today!